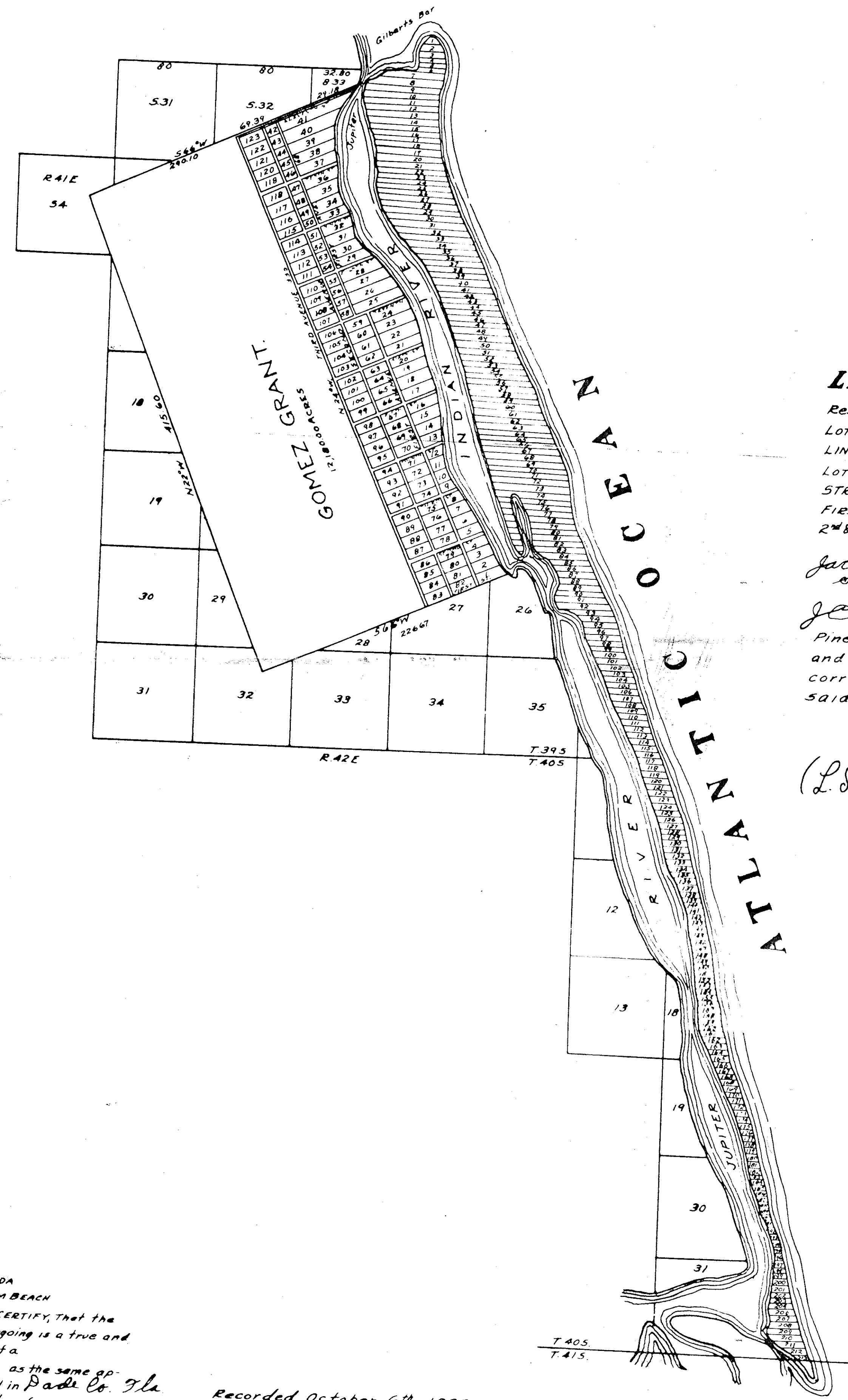


THIS IS A TRUE COPY OF THE ORIGINAL  
 PLAT OF RECORD OF GOMEZ GRANT AND  
 JUPITER ISLAND PLAT BOOK 1, PAGE 80 BLM  
 BEACH COUNTY, FLORIDA, NOW MARTIN COUNTY.

STATE OF FLORIDA } 55  
 COUNTY OF PALM BEACH }  
 THIS INSTRUMENT WAS FILED  
 FOR RECORD THIS 27 DAY OF  
 MAY 1910 AND DULY RECORDED  
 ON THE 27 DAY OF MAY 1910 IN  
 BOOK 1 OF PLATS ON PAGE 80.  
 RECORD VERIFIED.  
*Frederic E. Gienno*  
 CLERK CIRCUIT COURT  
 BY *Wm. J. Jolly*  
 DEPUTY CLERK



# GOMEZ GRANT AND JUPITER ISLAND

-THE PROPERTY OF-  
 -THE INDIAN RIVER PINE-APPLE-  
 -AND-  
 -COCOANUT GROVE ASS-  
 -OF-  
 -JACKSONVILLE, FLA.-  
 -SCALE 50CH = 1"-  
*Wm. J. Jolly* DEL  
 9/26/93

**LEGEND.**  
 Reserve. 100ft from line of survey along the Atlantic Coast  
 LOTS on Jupiter Island Schains 330' wide Nos. 1 to 214 North to South  
 LINES running East and West TRUE.  
 LOTS on Grant 10 chains \* 660 wide.  
 STREETS 33' wide running S 66° W  
 FIRST AVE 60' " " N 24° W  
 2nd & 3rd " 33' " " " " "

Jacksonville, Fla.  
 Sept. 28<sup>th</sup> 1893.  
 Personally appeared before me  
*J. C. Greeley* President of the Indian River  
 Pine Apple and Coconut Grove Association  
 and acknowledged the map below to be a  
 correct Plat of the property belonging to  
 said Association on Indian River

Witness my hand and seal the date  
 above written.  
 (L.S.)  
*A. F. Jolly*  
 Notary Public.

STATE OF FLORIDA  
 COUNTY OF PALM BEACH  
 I HEREBY CERTIFY, that the  
 above and foregoing is a true and  
 correct copy of a  
 Map as the same ap-  
 pears of record in Palm Co. Fla.  
 in Book No. 1 of  
 Plats at page 17  
*Frederic E. Gienno*  
 Clerk Circuit Court.  
 By *Wm. J. Jolly* D.C.  
 May 27-1910

Recorded October 6<sup>th</sup> 1893.  
*A. F. Quimby*  
 Clerk Circuit Court.  
 (Plat Book A page 17)

Copied by  
 BIDWELL & HOLSTLAW  
 Under direction of  
 C. H. RUGGLES  
 County Engineer  
 Traced by R.C.F. Checked by *C.H.R.*

ur0300.igr  
 GOMEZ GRANT

1000-693